



ČZ Motorcycle chains Catalogue



ČZ *Chains*
Czech Republic

Quality with Tradition





- tradition of motorcycle manufacturing since 1933
- complete chain and components production ensured in Strakonice, Czech Republic
- quality is verified on the famous motorcycle manufacturers assembling lines

The chain quality is created by three main factors

- 1) Modern technology and machine equipment including trained staff. The production procedure is performed on the automatic assembling lines with limited operator involvement. The control systems implemented in the technological processes to avoid the production mistakes and included in the requirements of ISO/TS standards.
- 2) Tradition in using the high quality and verified raw materials purchased only from European suppliers.
- 3) Chain development, including our own test rooms and laboratories supported also by cooperation with famous racing teams.

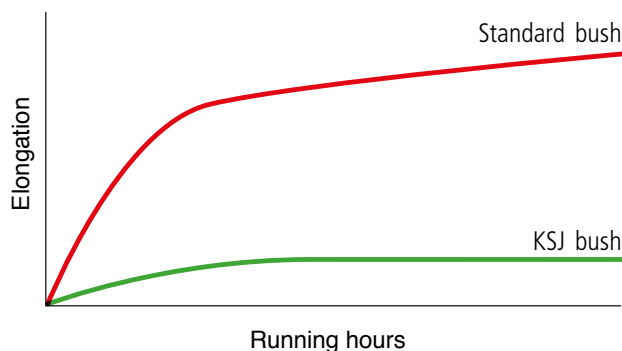
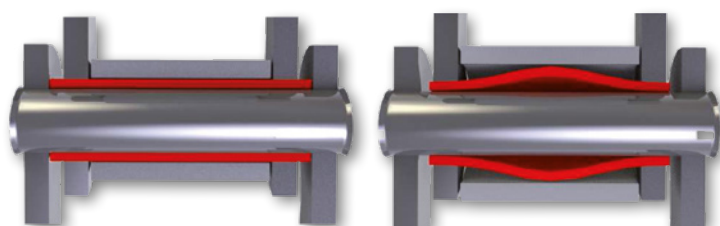
Technological innovation supporting the high quality of ČZ chains

On the selected types of chains is ČZ using the patented KSJ bush production technology. The marking KSJ means bush with profiled hole.

- zero initial elongation of the chain during the operation is achieved thanks to the bush hole optimized geometry
- 40 % smaller elongation in comparison to the chain with standard bushes, because from the first run is the bush hole and pin in ideal geometrical condition

KSJ bush

Standard bush





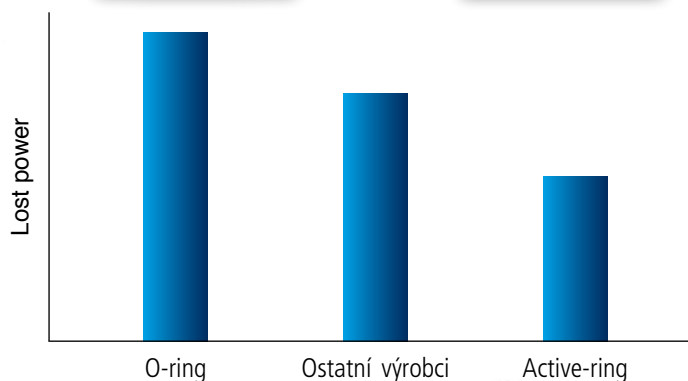
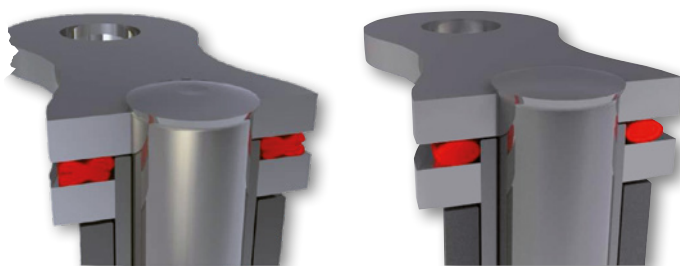
ACTIVE RING AND THE GREASE FOR LONG LIFE AND LOW WEAR

The result of lowest friction lost on ČZ chains is achieved thanks to professionally designed sealing ring shape and CVH grease combination.

Active ring and CVH grease especially developed for the company ČZ are also one of the factors of ČZ chains long durability also at the highest loads.

Active-ring

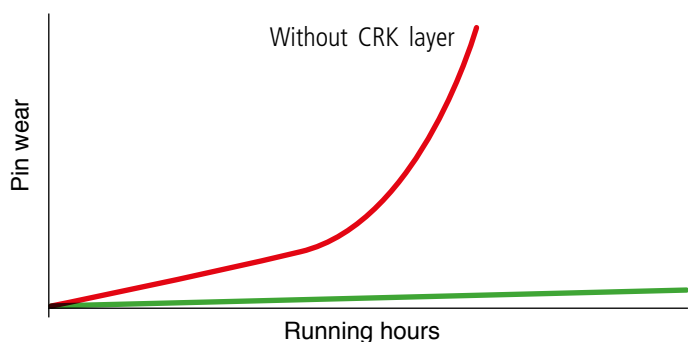
O-ring



CRK PINS LAYER

CRK layer coated on the pins surface is created by special chemical thermal method.

Extremely hard chromium carbides in the CRK layer resist against wear in hard dusty and muddy running conditions. The chrome presents is also a guarantee of pin surface corrosion resistance. The great features of CRK surface are used on the highest class of ČZ motocross MX chains for racing application.





Warning: the chain application must be correctly selected to the machine size and engine output. A mistake failure to do so could result in failure of the chain, causing damage to the machine or other property, serious injury to the rider or others, or even death of the rider or others. The installer is responsible to insure that the selected chain is correctly matched to the machine, and installed correctly. If you have any doubts, contact a professional workshop before use.

HIGH PERFORMANCE RANGE

High strength, stiffness and technical processing of High Performance chains are a guarantee of ideal partnership with highest performance motorcycles. The High Performance chains are reaching low wear and great condition after many thousands of kilometers in the highest operational loads. The reason of this excellence and quality is the implementation of latest development knowledge on the chain components like KSJ bushes, Active-ring, factory grease and well processed alloyed material.



Chain type	Pitch	Inner width	Pin length	Roller diameter	Plates thickness		Middle static strength	Weight 100 links	Connecting link		Type of sealing ring	Color
	mm				mm	mm			mm	mm		
520 SDZZ	15,875	6,48	21,3	10,30	2,4	2,2	41 500	1,89	•		Active-ring	G-Bk
525 SDZZ	15,875	7,94	23,5	10,30	2,4	2,6	46 200	2,10	•		Active-ring	G-Bk
530 SDZZ	15,875	9,53	25,3	10,30	2,4	2,6	48 600	2,21	•		Active-ring	G-Bk

STREET RANGE

ACTIVE-RING LINE

The main feature of Active-ring sealing is a long durability on the fast road motorcycles application. Especially the types with DZX marking fully replace the original chains, which you buy with a new motorcycle. For sure they can be used for racing purposes.



Chain type	Pitch	Inner width	Pin length	Roller diameter	Plates thickness		Middle static strength	Weight 100 links	Connecting link		Type of sealing ring	Color
	mm				mm	mm			mm	mm		
520 ORH	15,875	6,35	20,8	10,16	2,2	2,2	35 800	1,63	•	•	Active-ring	Ye-Bk
520 ORMX	15,875	6,35	20,4	10,16	2,2	2,0	34 500	1,59	•	•	Active-ring	G-Bk
520 DZX	15,875	6,35	20,9	10,20	2,2	2,2	37 800	1,78	•	•	Active-ring	Sr-Bk
525 DZX	15,875	7,94	22,8	10,30	2,4	2,2	40 000	1,98	•		Active-ring	Sr-Bk
530 DZX	15,875	9,53	24,9	10,30	2,4	2,4	43 000	2,14	•		Active-ring	Sr-Bk



The O-ring chains are economical option of the high quality Active – ring chains. Their features satisfy most of customers. The used chain O-ring sealing ensures a sufficient lifetime, keeping the purchasing costs reduced. The high tensile strength is a guarantee of safety ride with most of motorcycles types.

Chain type	Pitch	Inner width	Pin length	Roller diameter	Plates thickness		Middle static strength	Weight 100 links	Connecting link		Type of sealing ring	Color
					Inner	Outer			Rivet	Clip		
	mm	mm	mm	mm	mm	mm	N	kg				
428 OR	12,7	7,75	20,0	8,51	1,8	1,6	23 400	1,10		•	O-ring	Bu-Ye
520 ORM	15,875	6,35	20,8	10,16	2,2	2,0	34 000	1,60	•	•	O-ring	Bu-Ye
520 DZO	15,875	6,35	20,5	10,20	2,0	2,0	35 600	1,66	•	•	O-ring	Ye-Ye
525 DZO	15,875	7,94	20,9	10,30	2,4	2,2	40 000	1,98	•		O-ring	Ye-Ye
530 DZO	15,875	9,53	25,3	10,30	2,4	2,4	43 000	2,15	•		O-ring	Ye-Ye

ENDURO / ADVENTURE RANGE

The resistance in dusty and muddy conditions is the mission of the Enduro/Adventure chain range. Active-ring and O-ring sealing is resistant in tough riding conditions and they keep the chain in permanent good shape. The chain 520 RDO has a specially shaped inner plates, which allows to remove the dirt and mud from the chain wheel teeth during the ride.



Chain type	Pitch	Inner width	Pin length	Roller diameter	Plates thickness		Middle static strength	Weight 100 links	Connecting link		Type of sealing ring	Color
					Inner	Outer			Rivet	Clip		
	mm	mm	mm	mm	mm	mm	N	kg				
428 OR	12,7	7,75	20,0	8,51	1,8	1,6	23 400	1,10		•	O-ring	Bu-Ye
520 ORM	15,875	6,35	20,8	10,16	2,2	2,0	34 000	1,60	•	•	O-ring	Bu-Ye
520 RDO	15,875	6,35	20,8	10,16	2,2	2,0	33 800	1,61		•	O-ring	Bu-Ye
520 ORH	15,875	6,35	20,9	10,16	2,2	2,2	35 800	1,63	•	•	Active-ring	Ye-Bk
520 ORMX	15,875	6,35	20,4	10,16	2,2	2,0	34 500	1,59	•	•	Active-ring	G-Bk
520 DZO	15,875	6,35	20,5	10,20	2,0	2,0	35 600	1,66	•	•	O-ring	Ye-Ye
520 DZX	15,875	6,35	20,9	10,20	2,2	2,2	37 800	1,78	•	•	Active-ring	Sr-Bk
525 DZO	15,875	7,94	22,9	10,30	2,4	2,2	40 000	1,98	•		O-ring	Ye-Ye
525 DZX	15,875	7,94	22,8	10,30	2,4	2,2	40 000	1,98	•		Active-ring	Sr-Bk



Dakar 2018 - Stefan Svitko, Slovnaft team



MXGP 2018 - Jordi Tixier – BOS GP Team



Warning: the chain application must be correctly selected to the machine size and engine output. A mistake failure to do so could result in failure of the chain, causing damage to the machine or other property, serious injury to the rider or others, or even death of the rider or others. The installer is responsible to insure that the selected chain is correctly matched to the machine, and installed correctly. If you have any doubts, contact a professional workshop before use.

MOTOCROSS / SUPERMOTO RANGE

The Motocross / Supermoto chains don't have any sealing rings, because they are designed mainly for the racing purpose. Their design is lighter and more compact in dimensions.

The types with MX marking are produced with the CRK layer on the pins. This technology is significantly extending the chain life-time during the long term using in dusty and muddy conditions. The chain 520 GTX is developed especially for Trial purpose.



Chain type	Pitch	Inner width	Pin length	Roller diameter	Plates thickness		Middle static strength	Weight 100 links	Connecting link		Type of sealing ring	Color
					Inner	Outer			Rivet	Clip		
	mm	mm	mm	mm	mm	mm	N	kg				
420 MX	12,7	6,35	16,60	7,75	1,8	1,8	22 000	0,89		•		G-Bk
428 MX	12,7	7,75	17,80	8,51	1,8	1,6	23 000	1,05		•		G-Bk
520 M	15,875	6,35	18,10	10,16	2,2	2,0	35 000	1,51		•		Bu-Ye
520 EC	15,875	6,35	18,50	10,16	2,2	2,2	38 000	1,62		•		Ye-Bk
520 MX	15,875	6,35	18,10	10,16	2,2	2,0	35 800	1,51		•		G-Bk
520 GTX	15,875	6,35	16,75	10,16	1,8	1,8	26 000	1,21		•		Bu-Ye

BASIC RANGE

The Basic range chains are recommended for small volume motorcycles and mopeds. Dimensions and modification of Basic chains exactly correspond to the operational character and to the low transmitted power of small volume motorcycles and mopeds. Exception is just the chain 415 HT, which resist also to higher loads in racing conditions.



Chain type	Pitch	Inner width	Pin length	Roller diameter	Plates thickness		Middle static strength	Weight 100 links	Connecting link		Type of sealing ring	Color
					Inner	Outer			Rivet	Clip		
	mm	mm	mm	mm	mm	mm	N	kg				
415 S	12,7	4,88	13,0	7,75	1,4	1,4	16 300	0,61		•		Bu-Gy
415 HT	12,7	4,88	13,4	7,75	1,5	1,5	19 100	0,71		•		G-Bu
086	12,7	5,20	13,9	8,51	1,6	1,4	18 900	0,78		•		Bu-Bu
420 S	12,7	6,35	15,2	7,75	1,5	1,5	19 000	0,73		•		Bu-Gy
428 S	12,7	7,75	16,4	8,51	1,6	1,4	19 200	0,89		•		Bu-Bu



CONNECTING ELEMENTS

Clip V



Clip V is a standard modification of the connecting link with adjusting spring. The advantage is very simple connecting and disconnecting of the chain. It can be used repeatedly, but it is not applicable for higher speeds and more powerful motorcycles.

Clip P



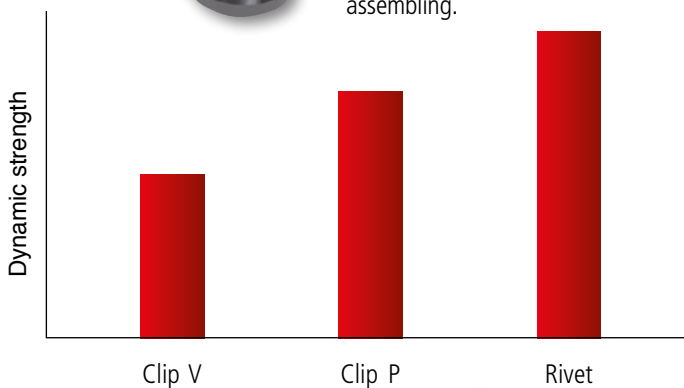
Clip P is a similar connecting link like the Clip V, there is just one difference, the plate must be fitted on the pin with interference using the tooling or pliers. The Clip P connecting link is necessary to use on the sealed chains, in order to avoid the grease leakage.

Rivet



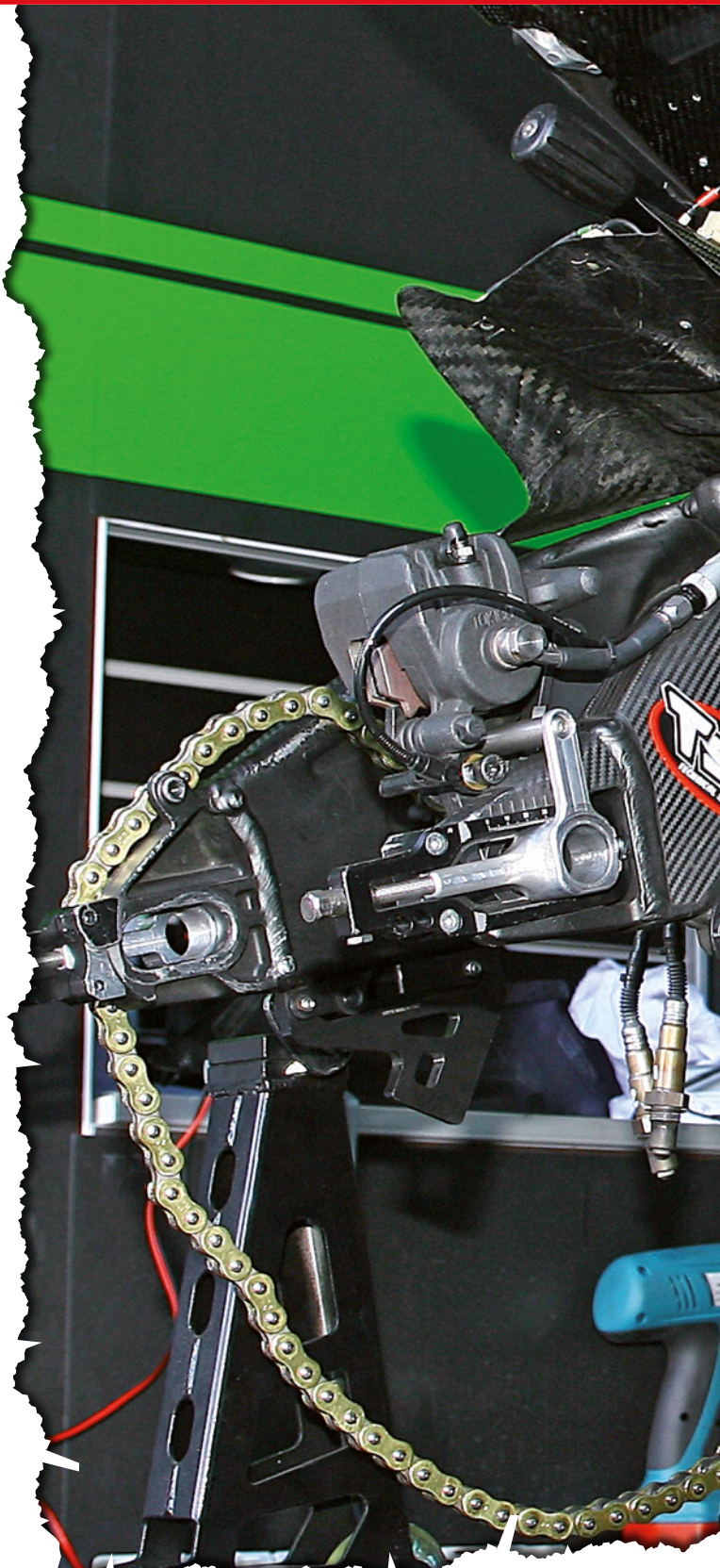
Rivet connecting link create a dismantlable connection with big operational safety. So it is suitable for all chain types, where is requested absolute reliability in all riding modes.

A special mounting device is necessary for its assembling and disassembling.



ČZ CONNECTING ELEMENTS OVERVIEW AND THEIR ASSIGNMENT

Clip V		Clip P		Rivet	
415 S	428 S	428 OR	520 ORM	520 DZO	525 SDZZ
415 HT	520 M	428 MX	520 ORH	520 DZX	530 DZO
086	520 GTX	520 MX	520 ORMX	520 SDZZ	530 DZX
420 S		520 EC	520 RDO	525 DZO	530 SDZZ
420 MX				525 DZX	

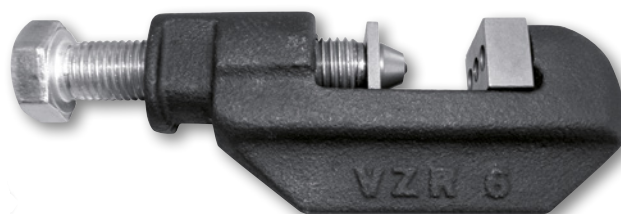


SERVICE TOOLING

The new generation of mounting device VZR 6 is reliably closing the chain with the Rivet link.

With the help of interchangeable adapters, which are a part of the whole kit, you can close the chains, rivet and disconnect as well.

Caution: the mounting device VZR 6 is dimensionally designed only for assembling, and disconnecting of ČZ chains with the pitch 15,858 mm (520, 525, 530).



Caution:

all data mentioned in this catalogue of ČZ motorcycle chains have the character of general information. When applying the chain for your motorcycle, always follow the chain type recommendation of the motorcycle manufacturer. If the endless chain without connecting link is originally used on your motorcycle, than it is necessary to use the Rivet type connecting element when installing a new chain.

CZ CHAINS APPLICATION CHART

Range	Non O-ring	O-ring	Active ring	Engine displacement														
				50	100	125	250	450	650	750	800	900	1000	1100	1200	1300	1400	
STREET	415 ST			[Bar at 50]														
	415 HT			[Bar at 125]														
	086			[Bar at 100]														
	420 ST			[Bar at 125]														
	428 ST			[Bar at 250]														
		428 OR			[Bar at 250]													
		520 ORM			[Bar at 500]													
		520 DZO			[Bar at 750]													
		525 DZO			[Bar at 850]													
		530 DZO			[Bar at 1050]													
				520 ORMX	[Bar at 650]													
				520 DZX	[Bar at 850]													
				520 SDZZ	[Bar at 950]													
				525 DZX	[Bar at 950]													
SUPERBIKE SUPERSPORT			520 SDZZ	[Bar at 950]														
			525 SDZZ	[Bar at 1200]														
SUPERCROSS MOTOCROSS	420 MX			[Bar at 100]														
	428 MX			[Bar at 125]														
	520 M			[Bar at 250]														
	520 MX			[Bar at 450]														
	520 EC			[Bar at 550]														
TRIAL	520 GTX			[Bar at 125]														
ENDURO ADVENTURE		428 OR		[Bar at 125]														
		520 ORM		[Bar at 500]														
		520 RDO		[Bar at 500]														
		520 DZO		[Bar at 750]														
		525 DZO		[Bar at 850]														
				520 ORMX	[Bar at 650]													
				520 ORH	[Bar at 750]													
				520 DZX	[Bar at 850]													
DUAL PURPOSE		428 OR		[Bar at 125]														
		520 ORM		[Bar at 500]														
		520 DZO		[Bar at 750]														
		525 DZO		[Bar at 850]														
				520 ORMX	[Bar at 650]													
ATV	520 EC			[Bar at 550]														
		520 ORM		[Bar at 450]														
		520 RDO		[Bar at 450]														
				520 ORMX	[Bar at 450]													
				520 ORH	[Bar at 550]													

Dealer stamp